



GRAYSTONE

# Birch

3,620 Sq Ft – 4 Bedroom, 3.5 Bath



The Birch: Featuring an open concept main floor master plan designed for a life time of living. Its interior is exceptionally spacious, combining functional areas such as the living and dining rooms along with easy access to the kitchen with an oversized island that's perfect for entertaining.

Many appreciate its style of architecture as it offers a larger amount of customization space. This main floor master planned design provides accessibility and ease of maintenance. Its lower level affords vast space delivering many options for entertaining, multiple bedrooms, and more.

**Featuring an open concept main floor master plan  
designed for a life time of living.**

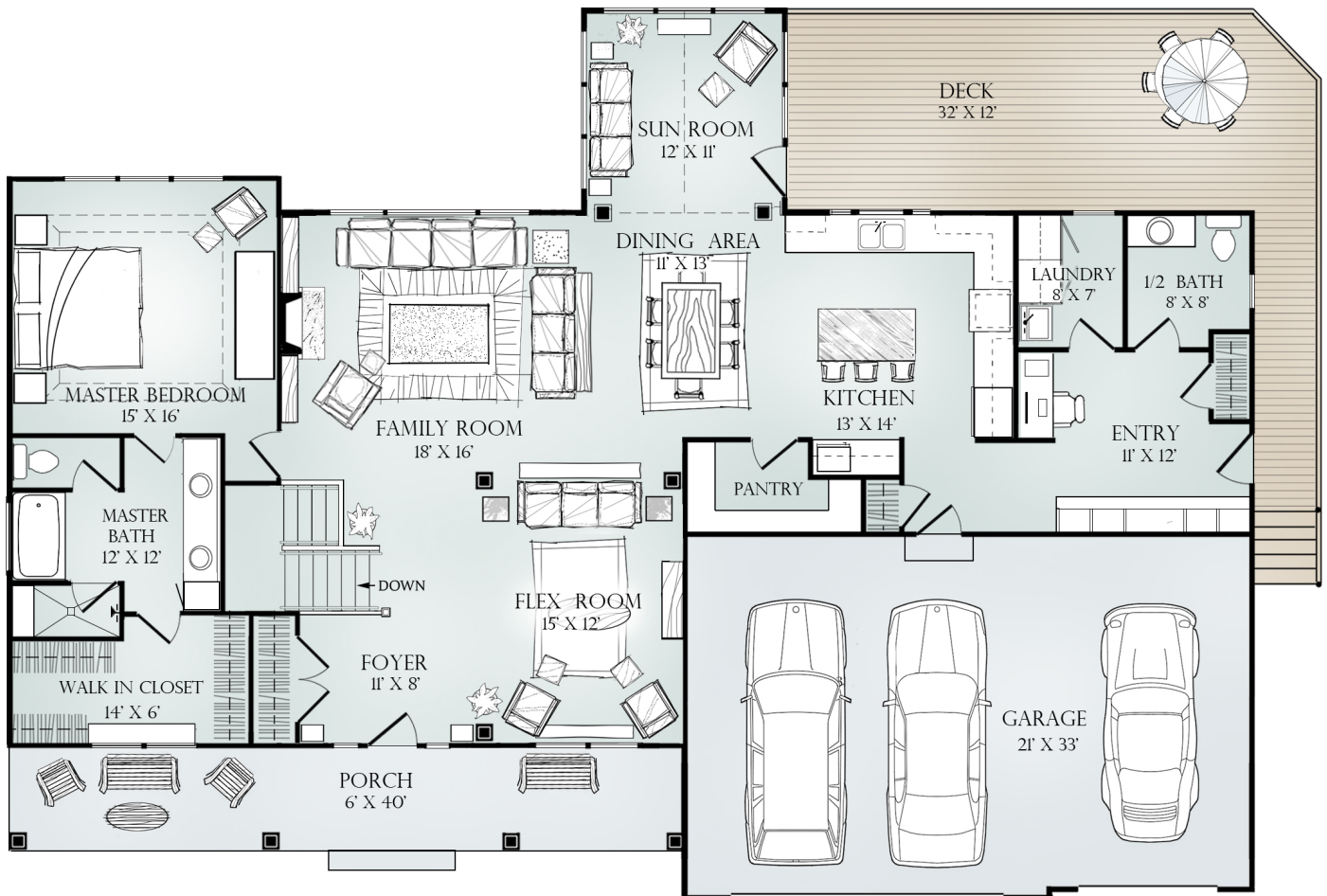
+ 1 (616)-437-4288 • [info@graystonehomes.net](mailto:info@graystonehomes.net)



GRAYSTONE

# Birch: Main Floor

2,140 Sq Ft





GRAYSTONE

# Birch: Lower Floor

1,480 Sq Ft

