



GRAYSTONE

# Aspen

3,294 Sq Ft – 4 bedroom, 3.5 bath



The Aspen: This wonderful 4 bedroom, 3.5 bath main floor master plan has been designed for a lifetime of enjoyment. Its interior is exceptionally spacious, combining functional areas such as the living and dining rooms along with easy access to the kitchen with an oversized island that's perfect for entertaining. Similar to ranch style living, many favor this style of architecture as it offers a larger amount of customization space.

The second floor is perfect for growing households with 3 bedrooms plus a versatile bonus room as a 4th bedroom option. Its uncomplicated structure offers a high degree of personalization, and the casual style evokes a relaxing atmosphere.

This main floor master planned design provides accessibility and ease of maintenance. Its lower level offers vast space lending itself to many options including entertaining, multiple bedrooms and more.

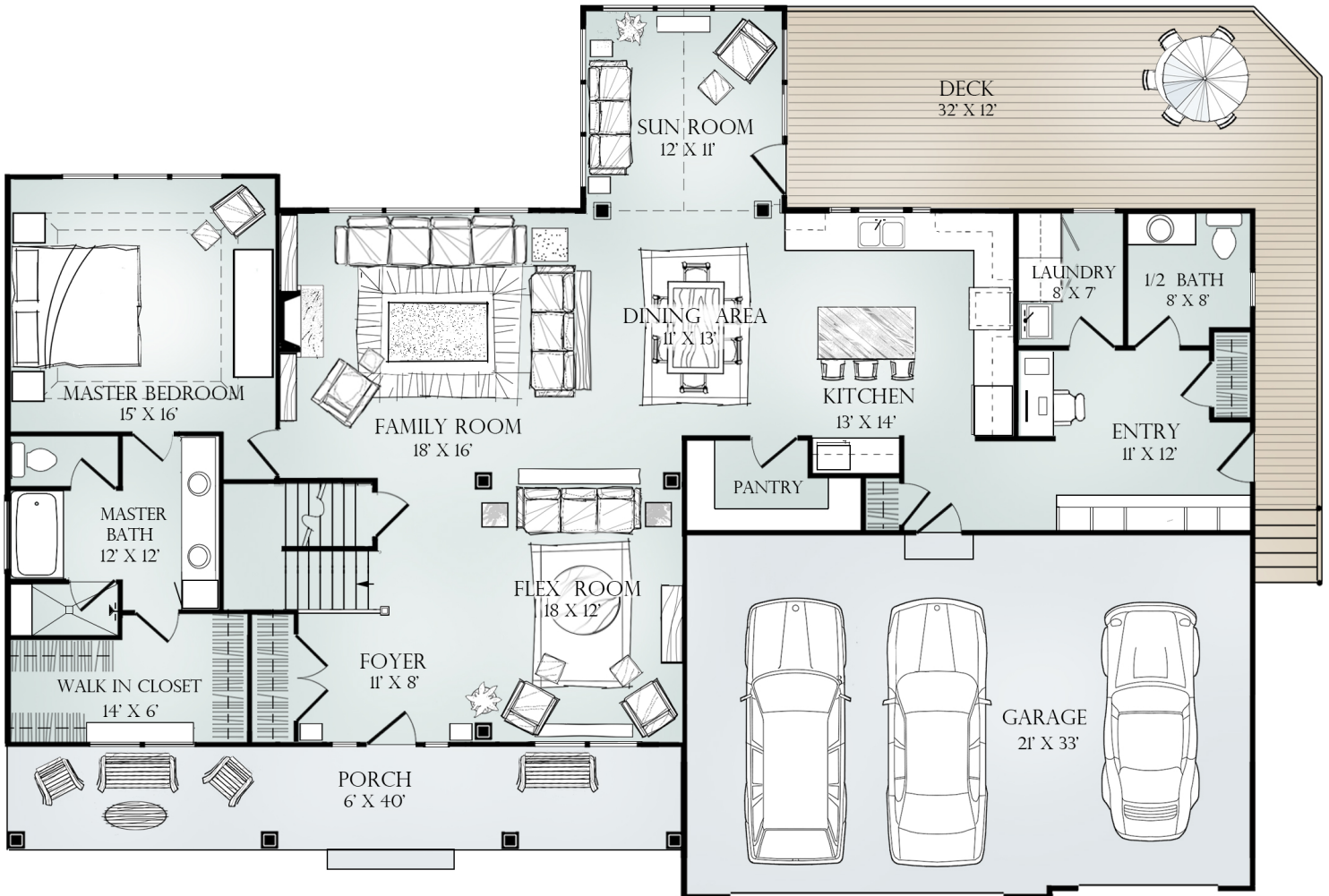
**Similar to ranch style living, many favor this style of architecture as it offers a larger amount of customization space.**



GRAYSTONE

# Aspen: Main Floor

2,140 Sq Ft





GRAYSTONE

# Aspen: Upper Floor

1,154 Sq Ft

